



# 2009-2010 GMT Quarterly Report for District (or Undistricted) **District 323 F1**

GMT: **KAMLESH JAIN**

Location: **INDIA**

GMT CA: **6**

## CLUBS

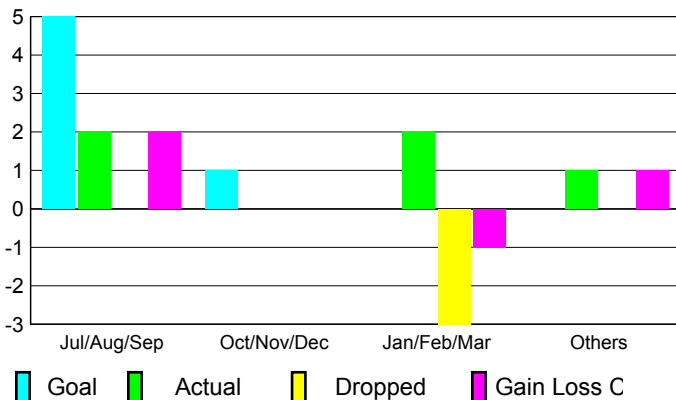
Club Results  
2009-2010

Clubs  
2008-2009

| Month         | New Club Goal | Actual New Clubs | Actual Dropped Clubs | Gain/Loss of Clubs | Gain/Loss of Clubs |
|---------------|---------------|------------------|----------------------|--------------------|--------------------|
| Jul/Aug/Sep   | 5             | 2                | 0                    | 2                  | 0                  |
| Oct/Nov/Dec   | 1             | 0                | 0                    | 0                  | 3                  |
| Jan/Feb/Mar   | 0             | 2                | -3                   | -1                 | 7                  |
| Apr/May/June  | 0             | 1                | 0                    | 1                  | -2                 |
| <b>Totals</b> | <b>6</b>      | <b>5</b>         | <b>-3</b>            | <b>2</b>           | <b>8</b>           |

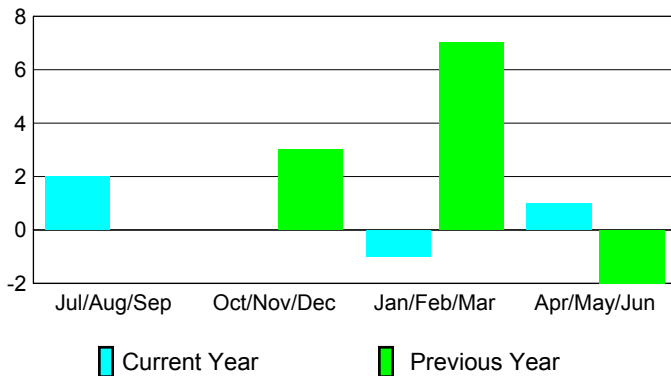
### Club Results 2009-2010

Goal, New, Dropped, Gain/Loss



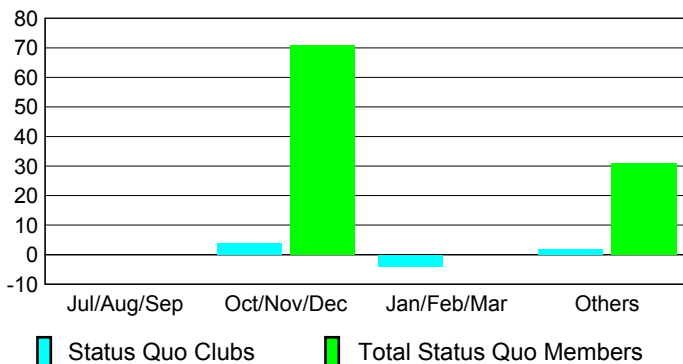
### Comparison of Club Gain/Loss

Current Year Compared to the Previous Year



### YTD Status Quo Clubs 2009-2010

Status Quo Clubs Compared to Status Quo Members



## MEMBERSHIP

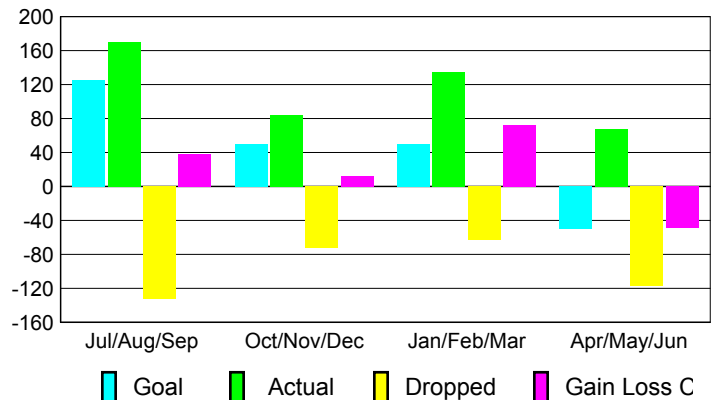
Membership Results  
2009-2010

Membership  
2008-2009

| Month         | Net Memb Goal | Actual New Memb | Actual Dropped Memb | Gain/Loss of Memb | Gain/Loss of Memb |
|---------------|---------------|-----------------|---------------------|-------------------|-------------------|
| Jul/Aug/Sep   | 125           | 170             | -132                | 38                | 3                 |
| Oct/Nov/Dec   | 50            | 84              | -72                 | 12                | 109               |
| Jan/Feb/Mar   | 50            | 135             | -63                 | 72                | 210               |
| Apr/May/June  | -50           | 68              | -117                | -49               | -134              |
| <b>Totals</b> | <b>175</b>    | <b>457</b>      | <b>-384</b>         | <b>73</b>         | <b>188</b>        |

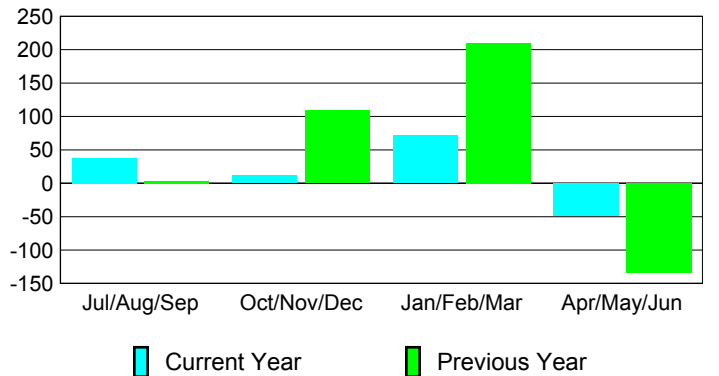
### Membership Results 2009-2010

Goal, New, Dropped, Gain/Loss



### Comparison of Membership Gain/Loss

Current Year Compared to the Previous Year



### Gender Comparison 2009-2010

